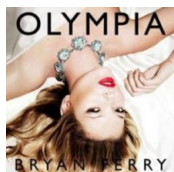


Bryan Ferry – Olympia (2010)

Wpisany przez bluelover

Wtorek, 30 Sierpień 2011 10:03 - Zmieniony Poniedziałek, 01 Sierpień 2016 16:14

Bryan Ferry – Olympia (2010)



CD1 01 – *You Can Dance* 02 – *Alphaville* 03 – *Heartache By Numbers* 04 – *Me Oh My* 05 – *Shameless* 06 – *Song To The Siren* 07 – *No Face, No Name, No Number* 08 – *BF Bass (Ode To Olympia)* [play](#) 09 – *Reason Or Rhyme* 10 – *Tender Is The Night* 11 – *Whatever Gets You Thru The Night* [play](#) 12 – *One Night* CD2

01 –

You Can Dance (Fred Falke Mix) 02 – *Alphaville (Time and Space Machine Mix)* 03 – *Heartache By Numbers (Circus Parade Mix)* 04 – *Me Oh My (DJ Cleaver Mix)* 05 – *Shameless (Still Going Mix)* 06 – *BF Bass (Ode To Olympia) (West End Wolf Mix)* 07 – *Reason Or Rhyme (Instrumental)*

Bryan Ferry - vocals, piano, keyboards David Williams, Nile Rodgers, Oliver Thompson, Dave Stewart, Neil Hubbard, David Gilmour, Jonny Greenwood, Phil Manzanera, Chris Spedding, Merlin Ferry - guitar Marcus Miller, Flea, Gary "Mani" Mounford, Andy Cato - bass Colin Good, Steve Nieve - keyboards Brian Eno - synthesizer Andy Newmark, Tara Ferry, Emily Dolan Davies - drums Frank Ricotti - percussion Aleysha Gordon, Hannah Khemoh, Sewuese Abwa, Alice Retif, Katie Turner, Ruby Turner, Me'sha Bryan, Shar White - chorus John Monkman, Robin "Radar" Rimbaud, Chris Mullings - electronics Anthony Pleeth - cello Perry Montague-Mason, Emlyn Singleton - violin Vicci Wardman - viola Andy Mackay - oboe

It is usually unwise to judge an album by its cover. But in the case of Bryan Ferry's *Olympia* – and many of his works as part of Roxy Music and solo – such a verdict would not be out of place. The surfaces of Ferry's works have always been as significant as their interiors. Here's Kate Moss, reclining, necklace and lipstick glittering, maintaining the status quo of Ferry album covers past. Two girls in their pants (and some none-too-subtle bushes) adorned the cover of Roxy Music's *Country Life* (1974), part of a run of soft porn that prefigured the style mag photography of the 90s, and included Jerry Hall painted blue (*Siren*, 1975). Ferry has always been feted as one of Britain's great art school pop creatives; he intends the artwork for *Olympia* (the location of his studio in London, incidentally) as a tribute to Manet's painting of the same name. Visually, it is quite a loose one. That *Olympia* scandalised French society in 1865 because Manet updated the classical image of a reclining female nude with a courtesan. This

Bryan Ferry – Olympia (2010)

Wpisany przez bluelover

Wtorek, 30 Sierpień 2011 10:03 - Zmieniony Poniedziałek, 01 Sierpień 2016 16:14

high-fashion pose of Moss oversells an album whose tracklisting struggles to live up to the fantasist bling of its packaging. The guest list, meanwhile, resembles one of those Vanity Fair group shots in which the smug and entitled pose indolently, assured of their own merits. Here are various Roxys, including Brian Eno, who left the group in 1973. They are joined by Nile Rodgers, David Gilmour, Flea, Scissor Sisters (who co-wrote the lumpen "Heartache by Numbers") Groove Armada (midwives to the surprisingly good "Shameless") and – feel free to double-take here – Radiohead's Jonny Greenwood, who presumably didn't let the man's support for hunting and Conservatism get in the way of an intriguing collaboration.

---guardian.co.uk

Bryan Ferry, CBE (born 26 September 1945, Washington, County Durham, UK) is an English singer, musician, and songwriter. Ferry came to public prominence in the early 1970s as lead vocalist and principal songwriter with the band Roxy Music, who enjoyed a highly successful career with three number one albums and ten singles entering the top ten charts in the United Kingdom. Ferry began his solo career in 1973, while still a member of Roxy Music, which continues to the present day.

download (mp3 @320 kbs):

[yandex](#) [4shared](#) [mega](#) [mediafire](#) [cloudmailru](#) [uplea](#)

[back](#)